

Community Advisory Group Update

700S 1600E PCE Plume Site

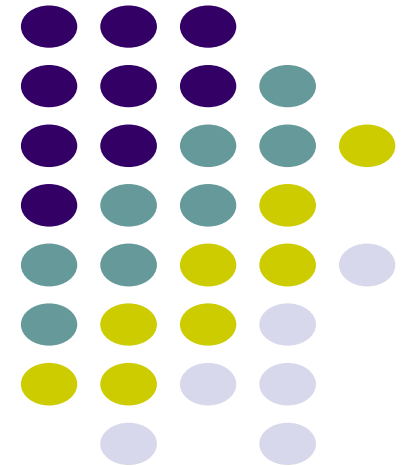
10 Dec 2020

Shannon Smith

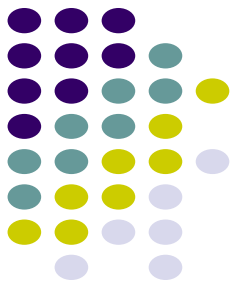
Department of Veterans Affairs

CERCLA Program Manager

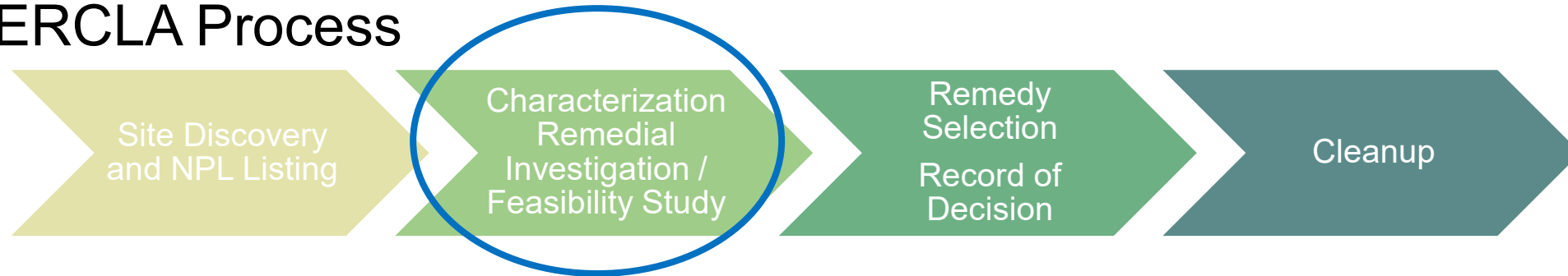
shannon.smith92@va.gov 801-582-1565 x2021



700S 1600E PCE Plume Site Overview

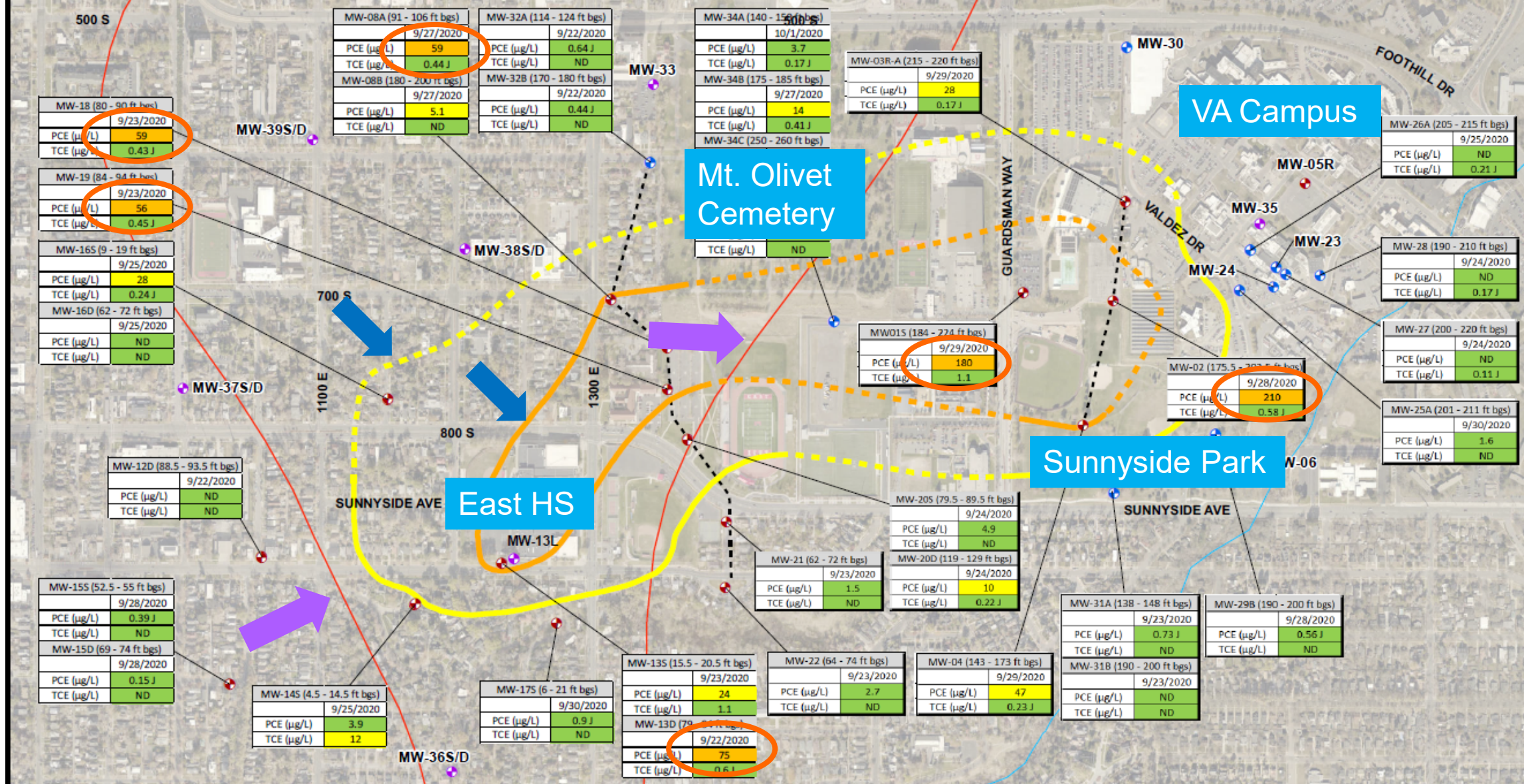


CERCLA Process



Define the problem... then evaluate solutions

- Installed monitoring wells to determine the plume boundaries (length, width, & depth)
- Collected data to determine how the plume moves
- Collected groundwater, surface water and indoor air samples to evaluate potential exposures



- Legend**
- Monitoring Well
 - New Monitoring Well
 - Proposed Monitoring Well
 - Monitoring Well Transect Line
 - Red Butte Creek
 - Fault Line

- PCE and TCE Concentrations (µg/L)**
- < 5 µg/L
 - 5 - 50 µg/L
 - > 50 µg/L
- PCE Contours**
- 5 µg/L
 - 50 µg/L
 - Dashed Line - Inferred Extent

Notes

1. Plume contours were developed using Leapfrog 3-dimensional visualization software to interpolate data from the Q3 2020 groundwater sampling event. The contours represent a top-down view of the 3-dimensional extent of the plume as interpreted in the Leapfrog software.

OU = operable unit
 PCE = tetrachloroethene
 TCE = trichloroethene
 µg/L = micrograms per liter

ft bgs = feet below ground surface
 J = Result is estimated
 ND = Analyte was not detected

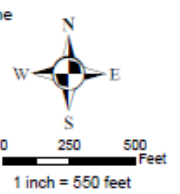
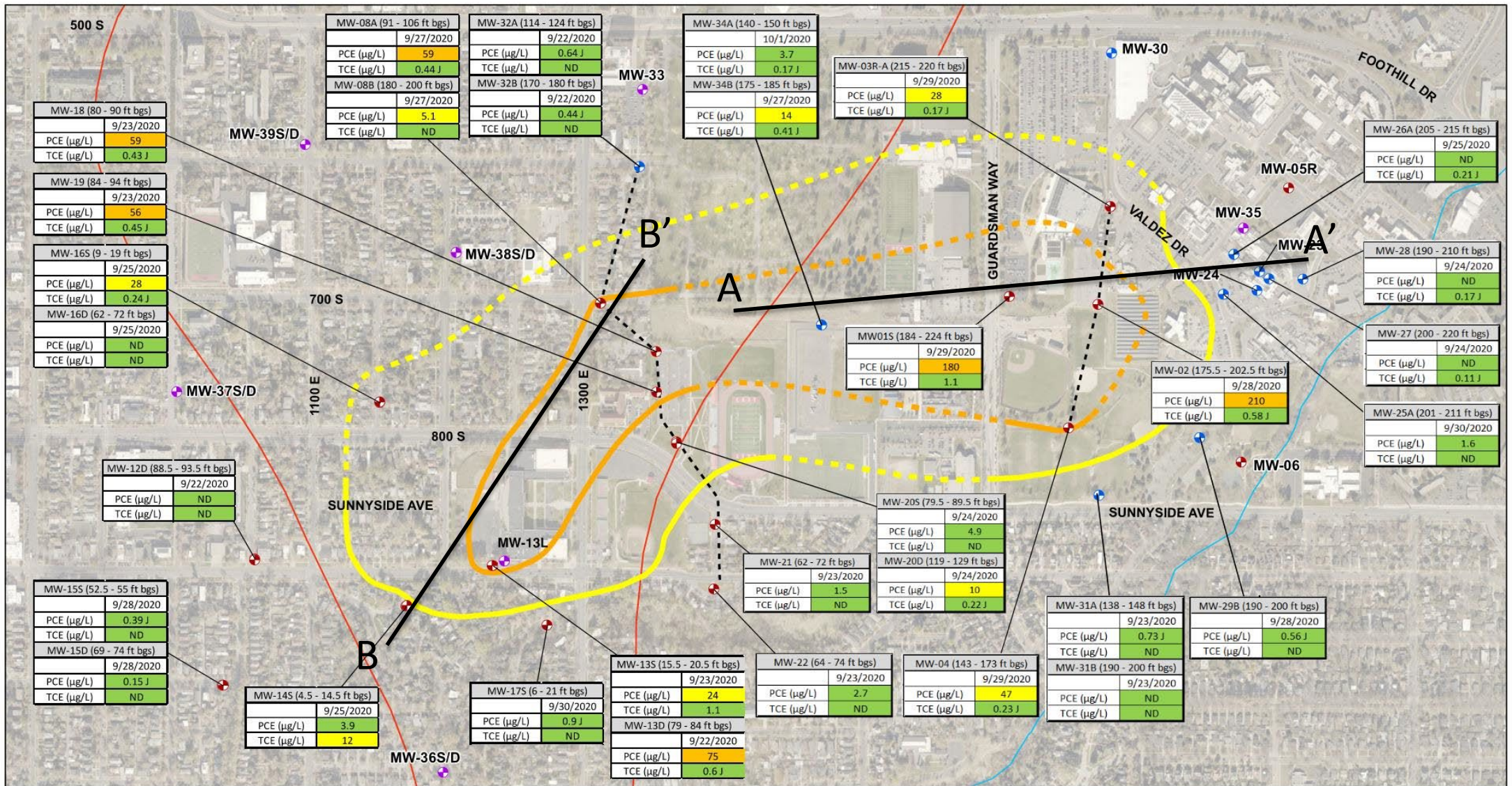


Figure 2
 Q3 2020 Groundwater PCE and TCE Results and
 Approximate Extent of PCE in Groundwater
 Shallow Aquifer

Minor Field Modification #1
 Phase 2 Remedial Investigation Work Plan
 OU1 700 South 1600 East PCE Plume
 Salt Lake City, Utah





- Legend**
- Monitoring Well
 - New Monitoring Well
 - Proposed Monitoring Well
 - Monitoring Well Transect Line
 - Red Butte Creek
 - Fault Line

PCE and TCE Concentrations (µg/L)

- = < 5 µg/L
- = 5 - 50 µg/L
- = > 50 µg/L

PCE Contours

- 5 µg/L
- 50 µg/L
- Dashed Line - Inferred Extent

Notes

1. Plume contours were developed using Leapfrog 3-dimensional visualization software to interpolate data from the Q3 2020 groundwater sampling event. The contours represent a top-down view of the 3-dimensional extent of the plume as interpreted in the Leapfrog software.

OU = operable unit ft bgs = feet below ground surface
PCE = tetrachloroethylene J = result is estimated
TCE = trichloroethylene ND = Analyte was not detected
µg/L = micrograms per liter

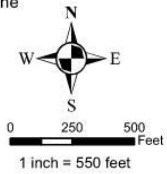


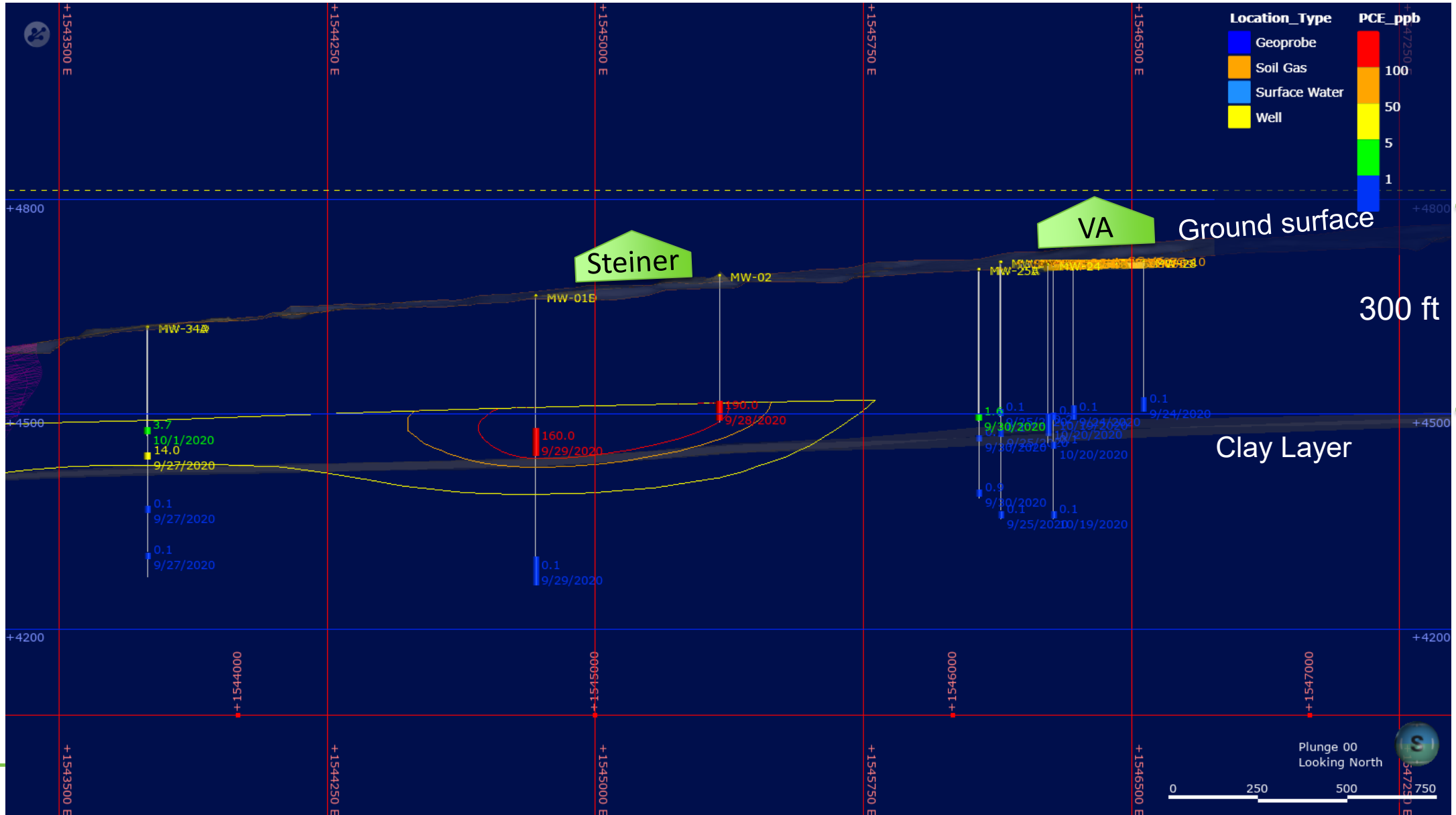
Figure 2
Q3 2020 Groundwater PCE and TCE Results and
Approximate Extent of PCE in Groundwater
Shallow Aquifer



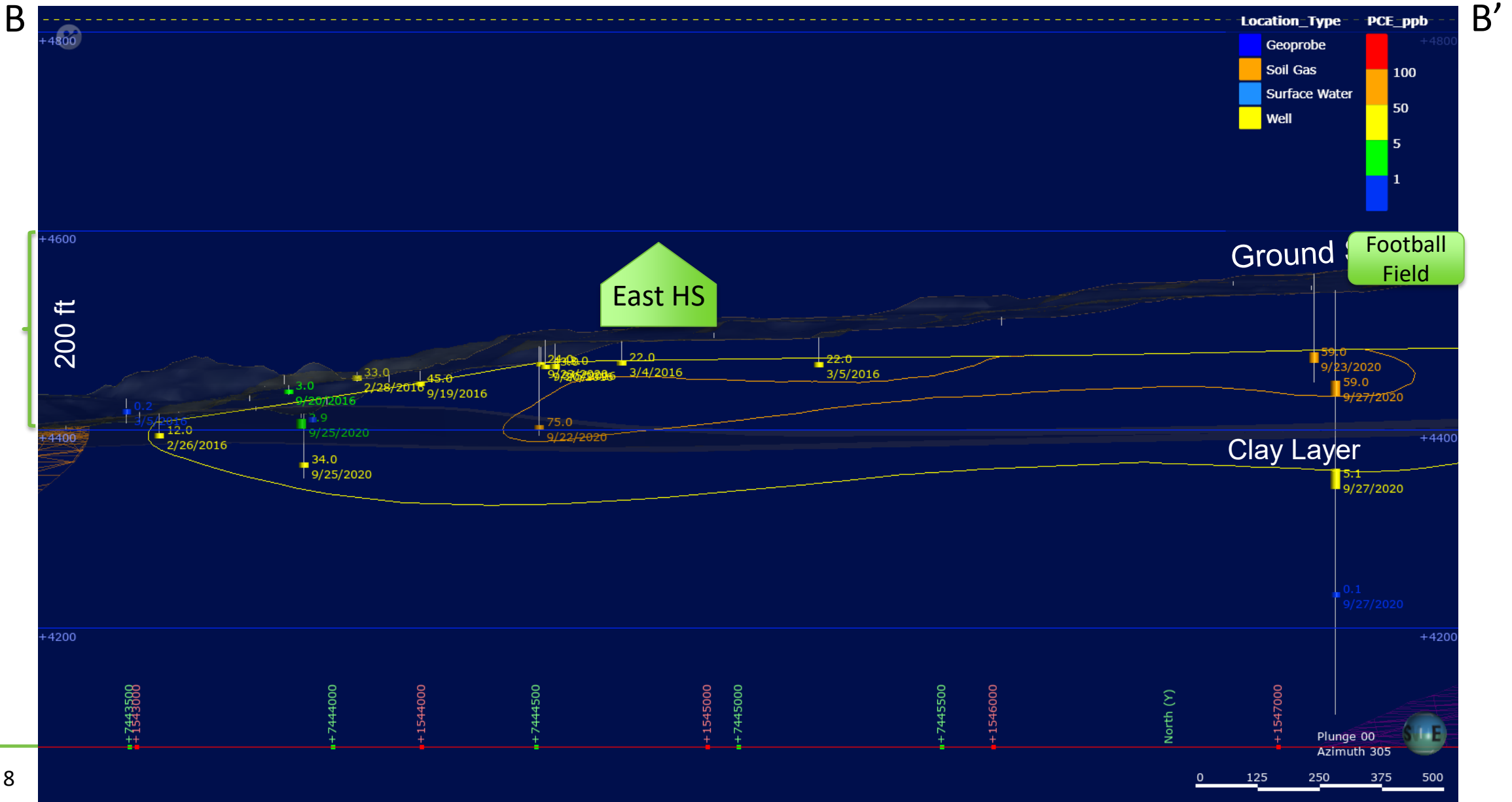
Minor Field Modification #1
Phase 2 Remedial Investigation Work Plan
OU1 700 South 1600 East PCE Plume
Salt Lake City, Utah

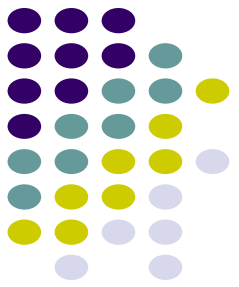
Section A-A' - Building 6/7 Area

A'



Section B-B' – East Side Springs Area





Upcoming Fieldwork Activities

- Installation of 10 shallow wells south and west of East HS
 - Shallow wells (< 30 ft deep) to evaluate vapor intrusion potential
- Groundwater sampling planned for March 2021
- Seep and Springs sampling planned for Spring 2021
 - Plan to measure flow rates of springs
- Vapor Intrusion sampling Feb-Mar 2021
- Soil Vapor sampling planned for Feb 2021