



## Advocates for VHA Groundwater Plume Resolution

700 South 1600 East PCE Plume – CERCLA NPL Site  
Salt Lake City, Utah

**D. Lynne Welsh**, CERCLA Remedial Program Manager, VA Salt Lake City Health Care System

**Jill Atwood**, Director of Communications, VA Salt Lake City Health Care System

**Donna J. Bell**, Public Affairs Specialist, VA Salt Lake City Health Care System

January 24, 2018



**VA**  
HEALTH  
CARE | Defining  
**EXCELLENCE**  
in the 21st Century

# 700 South 1600 East PCE Plume Site History

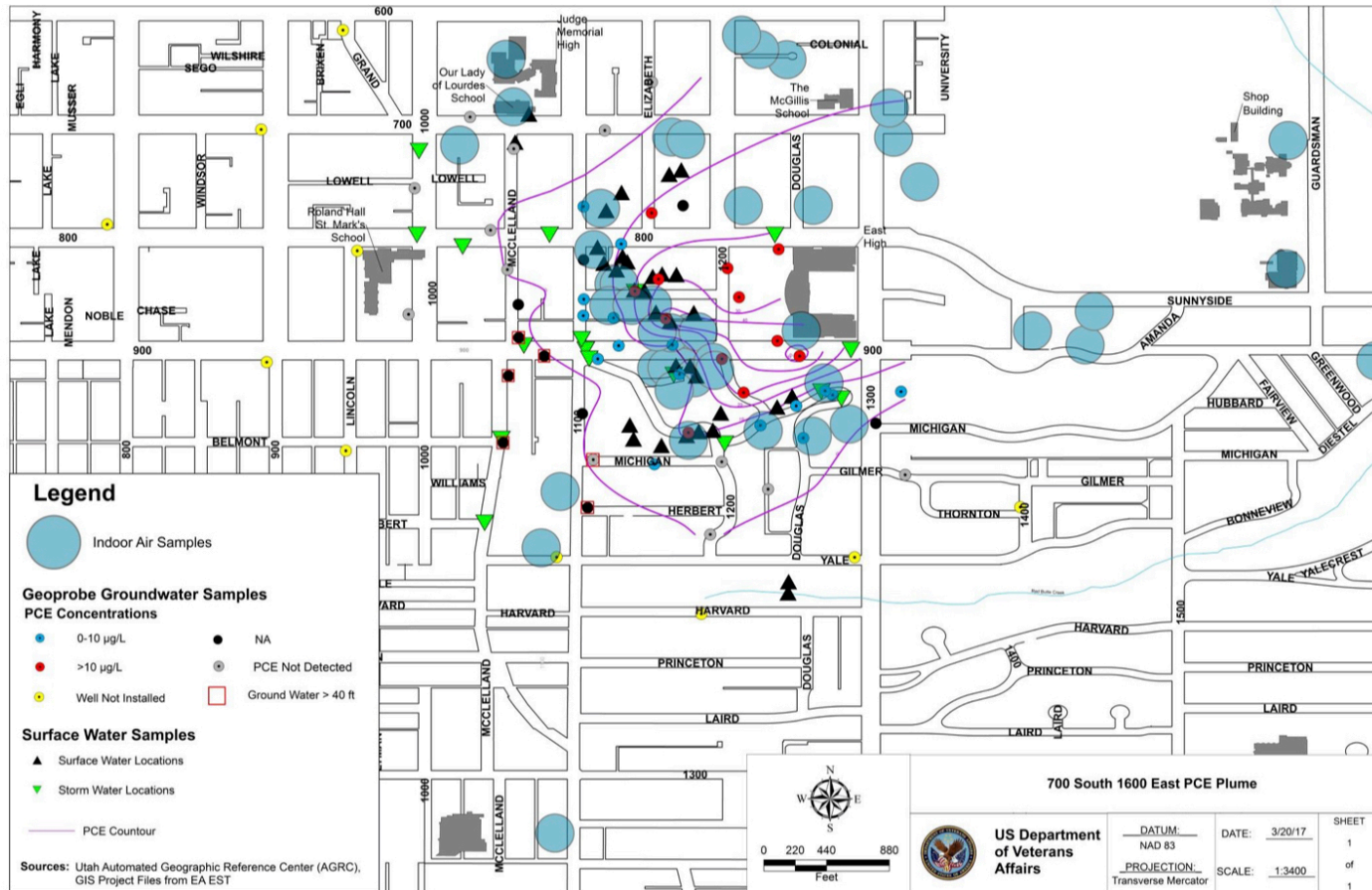
- VHA operated a dry cleaning facility on-site in late 70s
- Tetrachloroethylene (PCE), sometimes called Perc, is used as a dry cleaning agent or metal degreaser
- PCE was first detected at Mount Olivet irrigation well in the 90s
- SLC municipal drinking well was temporarily taken off line as a precaution after low levels of PCE were found

# 700 South 1600 East PCE Plume Site History

- PCE detected in East Side Springs area in 2010
- Site added to the National Priorities List in 2013
- VHA listed as potentially responsible party (PRP)
- VHA currently in the process of two remedial investigations
- ESS field work conducted from 2015 – 2017
  - 54 structures surveyed for vapor intrusion
  - Groundwater sampled at 42 locations
  - Surface water sampled at 50 locations



# 700 South 1600 East PCE Plume AOU-1 Field Work



# 700 South 1600 East PCE Plume

## What's Happening in 2018?

### What is happening in 2018?

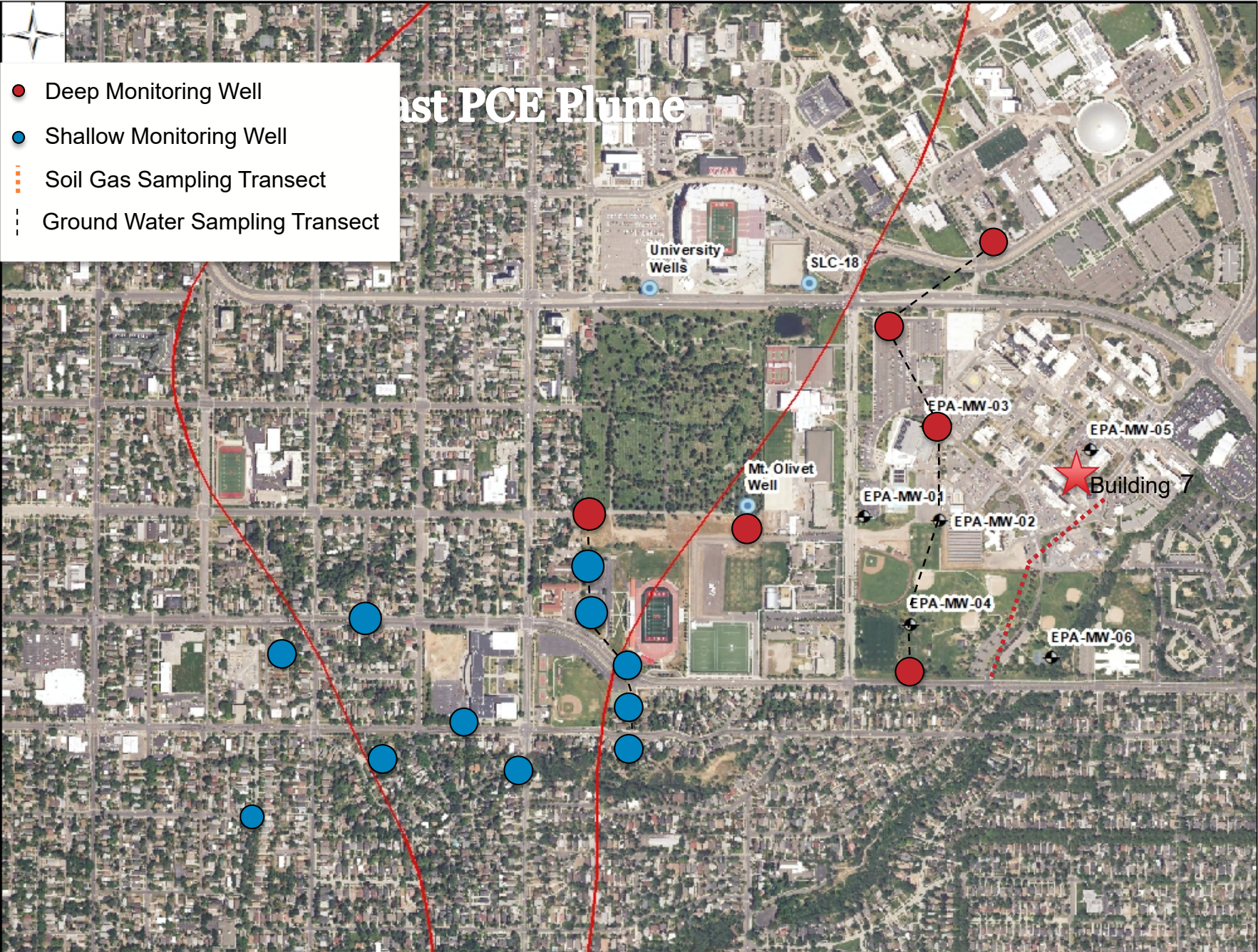
- Accelerated Operable Unit-1 (AOU-1) Indoor Air Investigation
  - Draft Remedial Investigation Report and Draft Focused Feasibility Study due to be submitted in June 2018
  - Reports will focus on the potential for vapor intrusion from groundwater contamination

# 700 South 1600 East PCE Plume

## What's Happening in 2018?

- Operable Unit 2 (OU-2) Groundwater Investigation
  - Remedial Investigation Work Plan currently with EPA (approval estimated February 2018)
  - RI will be conducted in phases
  - VHA to install shallow and deep monitoring wells, along with groundwater sampling, soil-gas analysis and surface water sampling
  - VHA will define dimensions and extent of plume, trace PCE plume to source and use research to help develop remedial methods
  - Mobilization to begin March 2018







# 700 South 1600 East PCE Plume

## What's Happening in 2018?

- Historic Records Research
  - Research to add to VHA knowledge of historical uses of land and activities conducted in the past
  - Information gathered to help VHA understand nature and extent of Plume site



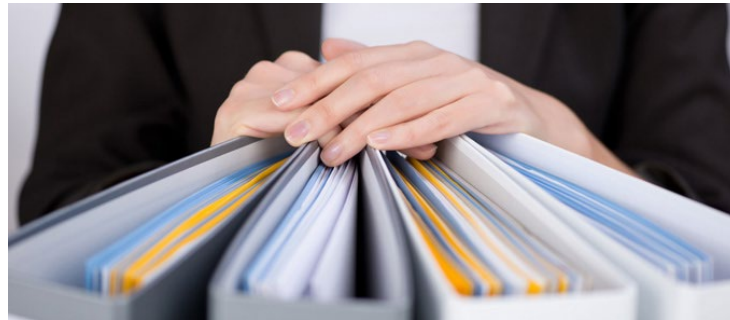


# 700 South 1600 East PCE Plume

## The Administrative Record

### What is the Administrative Record?

The administrative record (AR) includes all factual, technical, scientific material, correspondence or data considered in decision making



# 700 South 1600 East PCE Plume The Administrative Record

- A hard copy of the AR currently resides in the Anderson-Foothill Library
- The AR also resides in our website at:  
<http://pceplume-700s1600e.net/>
- VHA is considering using an electronic AR in the future



# 700 South 1600 East PCE Plume The Administrative Record

## Challenge:

According to manager of the Anderson-Foothill Library, there is no more space available for our growing administrative record





# 700 South 1600 East PCE Plume The Administrative Record

## VHA's Proposed Solution:

- VHA will update our website to be 508 compliant to host the AR
- Documents will be provided in either electronic or paper format upon request
- VHA will provide recent paper documents to the library along with instructions on how to request paper or electronic copies
- An index of all project documents will be available at the library



**700 South 1600 East PCE Plume**

**Questions?**

# VHA Salt Lake City HCS

